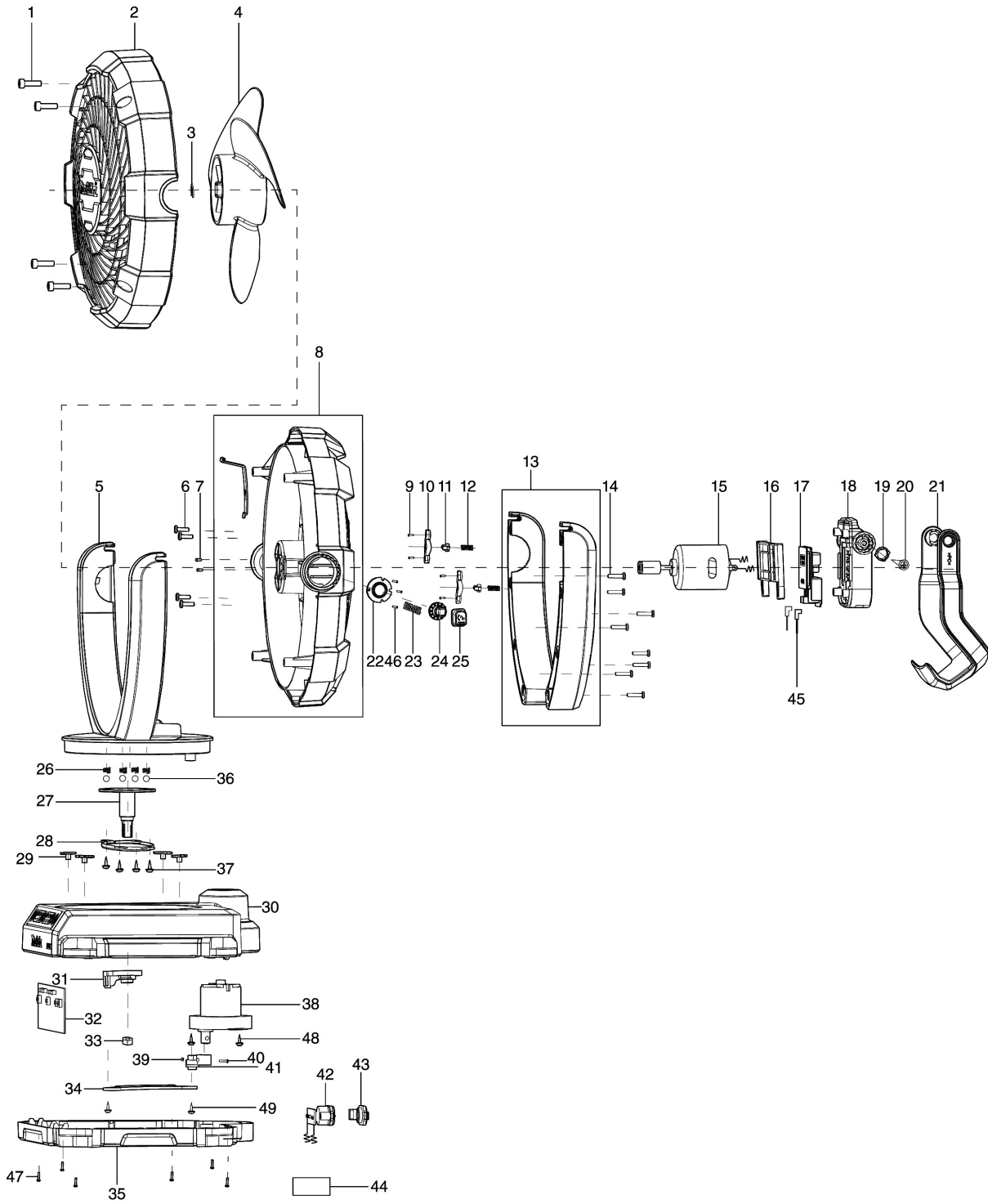


모델명 : DCF102Z



모델명 : DCF102Z

도번	부품코드	품명	단위	소요량
001	TE00000201	INNER HEXAGON 4X14	EA	4
002	TE00000258	FRONT COVER OF THE BODY	EA	1
003	TE00000199	서클립	EA	1
004	TE00000186	FAN BLADE	EA	1
005	TE00000259	FRONT COVER OF THE STAND	EA	1
006	TE00000202	스크류 3X10	EA	4
007	TE00000206	P.H. SCREW M3X5	EA	2
008	TE00000260	BACK COVER OF THE BODY	EA	1
009	TE00000203	SELF-TAPPING SCREW 2.5X8	EA	4
010	TE00000189	SMALL GEAR PRESSING PARTS	EA	2
011	TE00000190	SPARE PARTS FOR POM	EA	2
012	TE00000197	스프링1	EA	2
013	TE00000261	BACK COVER OF THE SUPPORT	EA	1
014	TE00000204	스크류 3X14	EA	8
015	TE00000262	모터 앤드 리드	EA	1
015A	TE00000510	MOTOR AND LEAD	EA	1
016	TE00000263	CLAMPING PARTS OF BATTERY TOUC	EA	1
017	TE00000313	터미널	EA	1
018	TE00000264	THE BATTERY HOUSING	EA	1
019	TE00000191	POM POSITION PART	EA	2
020	TE00000205	CROSS BELT PAD SCREWS 4X10	EA	2
021	TE00000265	HOOK&HANDLE	EA	1
022	TE00000266	HEAD-LOCK ALUMINUM PARTS1	EA	1
023	TE00000267	SPRING(LARGE)	EA	1
024	TE00000268	HEAD-LOCK ALUMINUM PARTS2	EA	1
025	TE00000269	HEAD-LOCK BUTTON	EA	1
026	TE00000270	SPRING(MIDDLE)	EA	4
027	TE00000271	PRINCIPAL AXIS	EA	1
28	TE00000272	PRESSING/FIXING PART(FOR PRINC	EA	1
029A	TE00000474	POM PLATE	EA	4
30	TE00000273	UP COVER OF THE BASE	EA	1
31	TE00000274	SHAKE HEAD-POM 1	EA	1
32	TE00000275	PCB	EA	1
33	TE00000276	너트 M8	EA	1
34	TE00000277	SHAKE HEAD -CONNECTION IRON	EA	1
35	TE00000278	LOWER COVER OF THE BASE	EA	1
36	TE00000063	스틸 볼	EA	4
37	TE00000279	태핑 스크류 3X8	EA	4
38	TE00000280	서브 모터	EA	1
39	TE00000281	너트 M3	EA	1
40	TE00000102	PHILLIPS HEAD SCREW M3*14	EA	1
41	TE00000282	SHAKE HEAD-POM 2	EA	1
42	TE00000283	FIXED PART OF DC BASE	EA	1
43	TE00000192	CHARGING SOCKET PLUG	EA	1
44	TE00000309	RAITING LABEL	EA	1
45	TE00000284	LEAD WITH INSERTING PIECE	EA	2
045A	TE00000511	LEAD WITH INSERTING PIECE	EA	2
46	TE00000203	SELF-TAPPING SCREW 2.5X8	EA	3
47	TE00000204	스크류 3X14	EA	6

모델명 : DCF102Z

도번	부품코드	품명	단위	소요량
48	TE00000279	태핑 스크류 3X8	EA	2
49	TE00000279	태핑 스크류 3X8	EA	2
50	TE00000317	스위치 라벨	EA	1
51	TE00000515	GROMMET	EA	1
A01	TE00000212	아답타(KR)	EA	1